

TORQ STORM[®]

BILLET SUPERCHARGERS



Pontiac Single
ARP-K-GM-Pont

Installation Instructions

PONTIAC SINGLE

ARP-K-GM-PONT

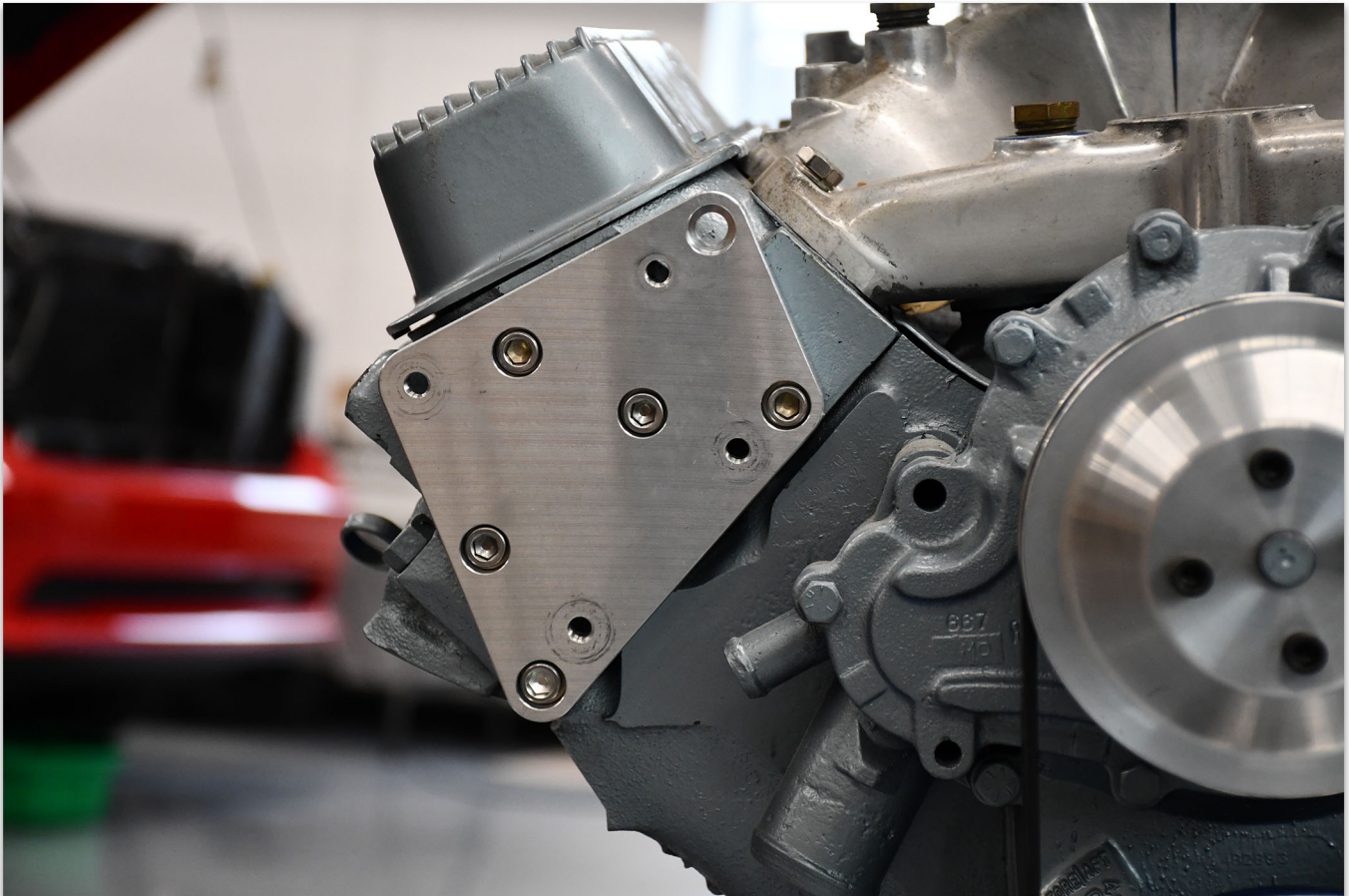


STEP 1

Disconnect battery.

Install supercharger plate ARP-GM10067 on side head. (A) 3/8-16 X 3/4" (qty may vary depending on head choice.)

Tighten to 29 ft lbs



STEP 2

*Install supercharger plate to the head plate
using (4) 3/8-16 - 4.5" bolts and (4) 3.437" spacers.
You will need to temporarily remove the tensioner to
get access to the lower bolt hole.*

Tighten to 29 ft lbs

*Re-install the tensioner and torque to
17 ft lbs*



Installation Instructions

PONTIAC SINGLE

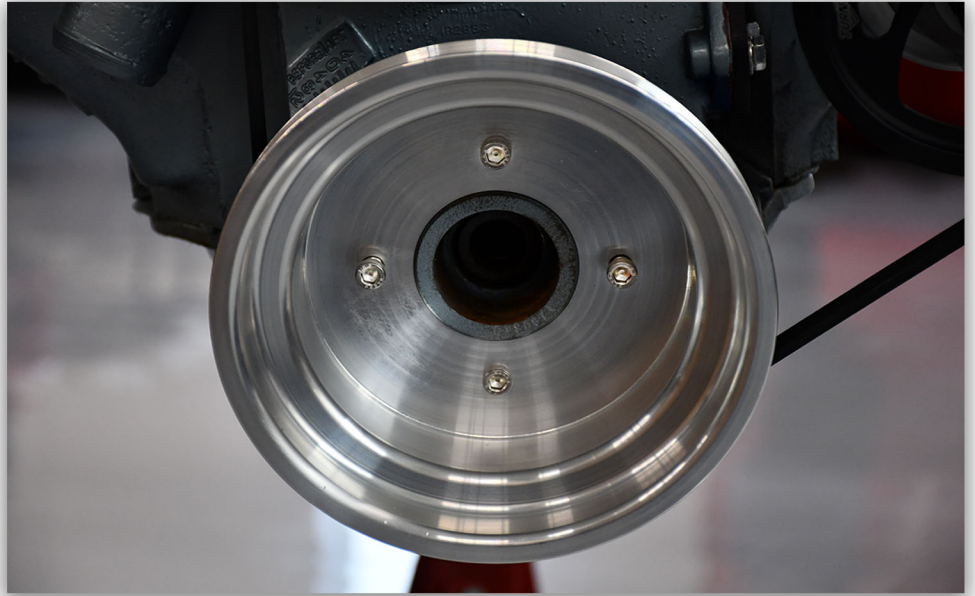
ARP-K-GM-PONT



STEP 3

Install crank pulley using (4)
5/16-24 x 1" bolts and
washers.

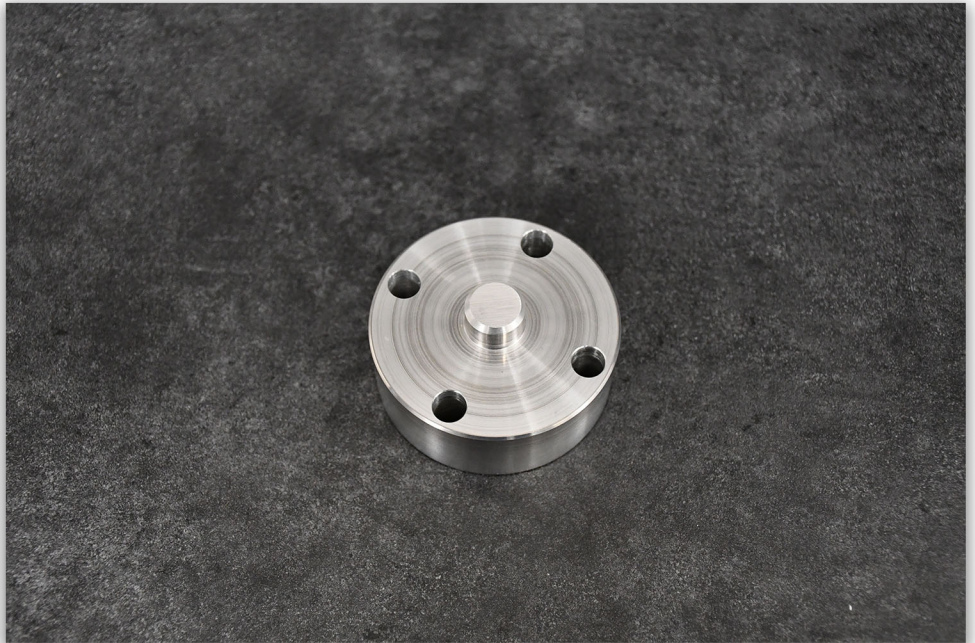
Tighten to 19 ft lbs



STEP 4

If using stock fan, install fan
spacer ARP-S-FAN-1000 using
(4) 5/16-24 x 1.75.

Tighten to 19 ft lbs



STEP 5

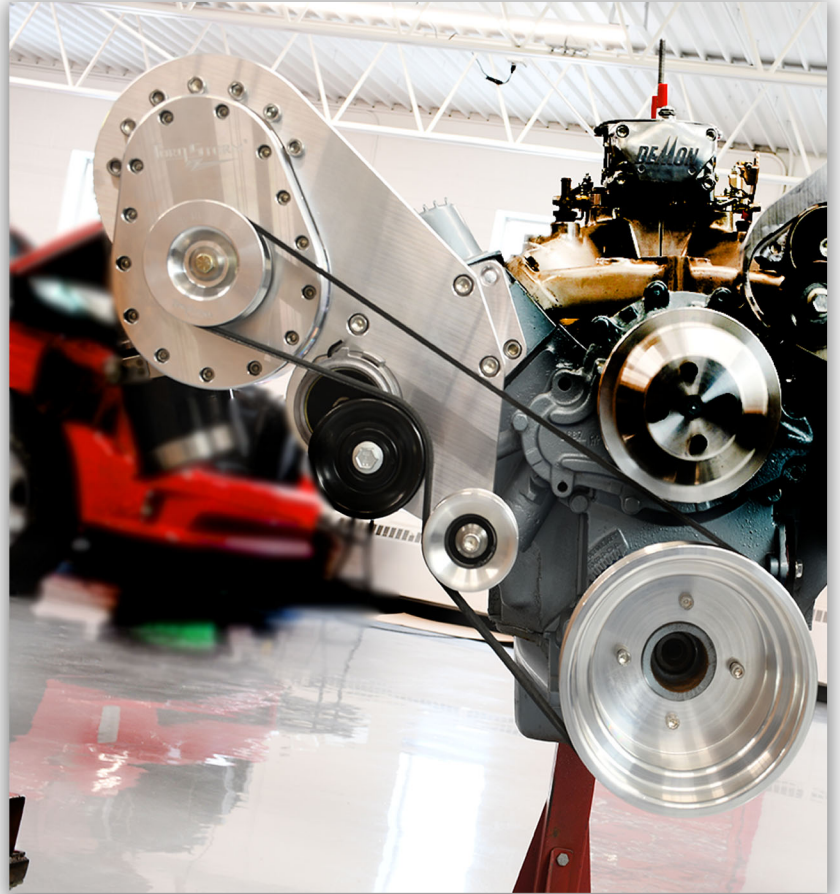
*Install supercharger head unit with
(7) 3/8-16 x 1.25" bolts and washers.*

Tighten to 29 ft lbs

STEP 6

Install supercharger belt K080565.

*Start with the belt on the supercharger
and crank pulleys. Then slide it under
the idler pulley and over the tensioner
pulley.*



Installation Instructions

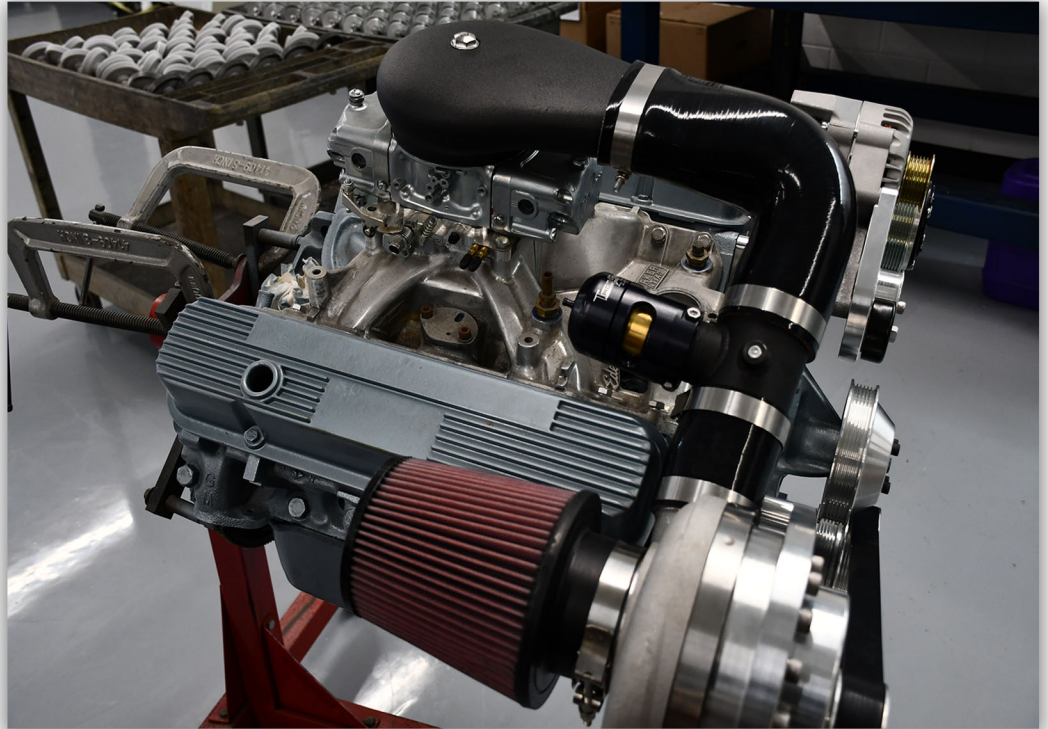
PONTIAC SINGLE

ARP-K-GM-PONT



STEP 7

Install air filter



STEP 8

You may need to rotate the supercharger scroll by loosening the v-band clamp. Do not over-tighten. Only tighten until the scroll can not be rotated anymore. Roughly a half inch of threads showing.

Install 3" silicone boot on SC outlet, connect to tubing with BOV bung. Use silicone 3" to 3.5" to carb hat with supplied o-ring in between the carb hat and carb.

Note: You may need to trim silicone hoses for best fit.

** Connect BOV to vacuum source using supplied vacuum hose.*

Installation Instructions

PONTIAC SINGLE

ARP-K-GM-PONT



- *Replace all spark plugs with one or two heat ranges cooler.*
- *Fuel/ Ignition managment system must be tuned when installing Torqstorm Supercharger.*
- *Reconnect battery*
- *Double check all fittings, bolts, clamps. Make sure all wires and lines are properly secured with clamps or wire ties .*
- *Make sure fuel tank is filled with 91 octane or higher fuel.*
- *Start engine and allow to idle a few minutes then shut down.*
- *Recheck to be sure that no hoses, wires, ect are near the exhaust, headers, or supercharger components.*
- *Recheck tune before commencing test drive.*
- *After test drive examine all bolts, belts and check for leaks or running issues before finishing with the vehicle.*
- *Change your oil in the S/C every 10k miles or once a year. Failure to run Torqstorm approved oil will void warranty. **Order direct from Torqstorm Part NO ARP-OIL-GT46***
- ***Fill out warranty card and send it in 30 days from arrival of supercharger to qualify.***

Failure to do so may affect your limited lifetime warranty.

Additional information for Boost

- It is suggested to run a wideband o2 sensor to monitor correct air/fuel ratio. 11.5 is ideal for 91 octane or higher pump gas.

- *PLEASE TAKE SPECIAL NOTE: Operating the vehicle without all the sub assemblies completed and properly installed and working may cause FAILURE OF MAJOR ENGINE COMPONENTS.*

- If you have any questions or concerns contact us at sales@torqstorm.com

- *Torqstorm superchargers come from the factory filled with 6 oz of ARP-OIL-GT46*

- *Supercharger is ready to run*